



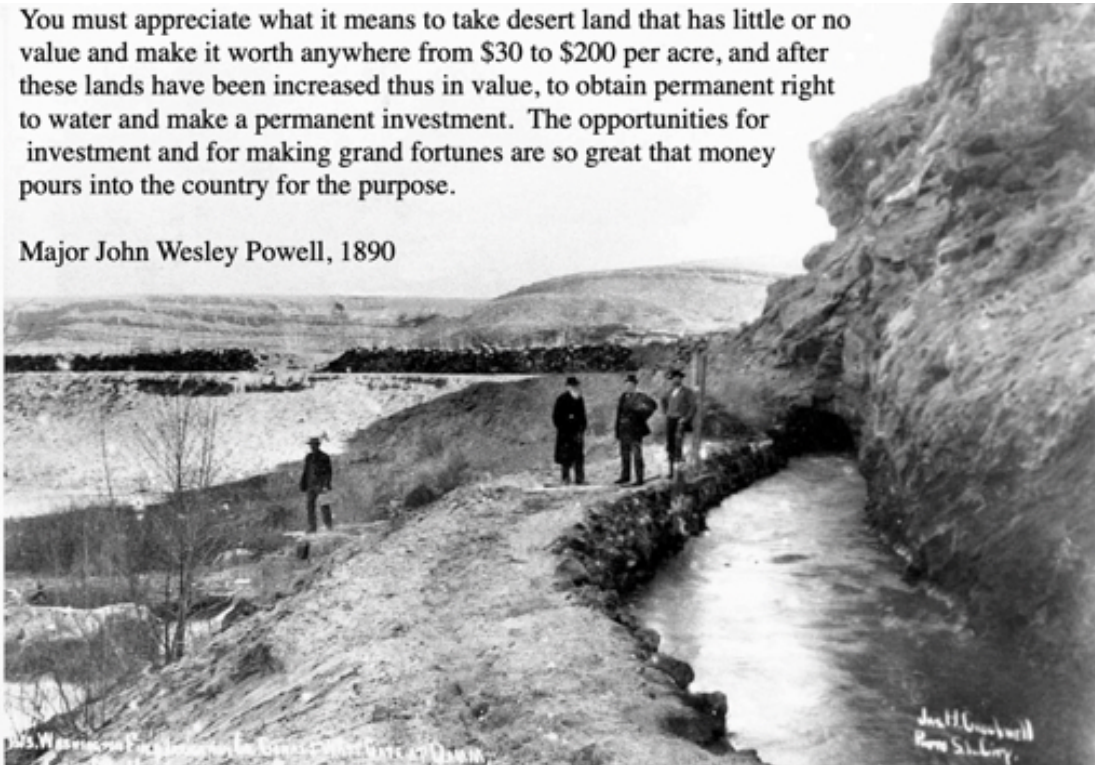
Construction on Washington Fields Dam Spillway



Construction on Saint George and Washington Irrigation Company Canal

You must appreciate what it means to take desert land that has little or no value and make it worth anywhere from \$30 to \$200 per acre, and after these lands have been increased thus in value, to obtain permanent right to water and make a permanent investment. The opportunities for investment and for making grand fortunes are so great that money pours into the country for the purpose.

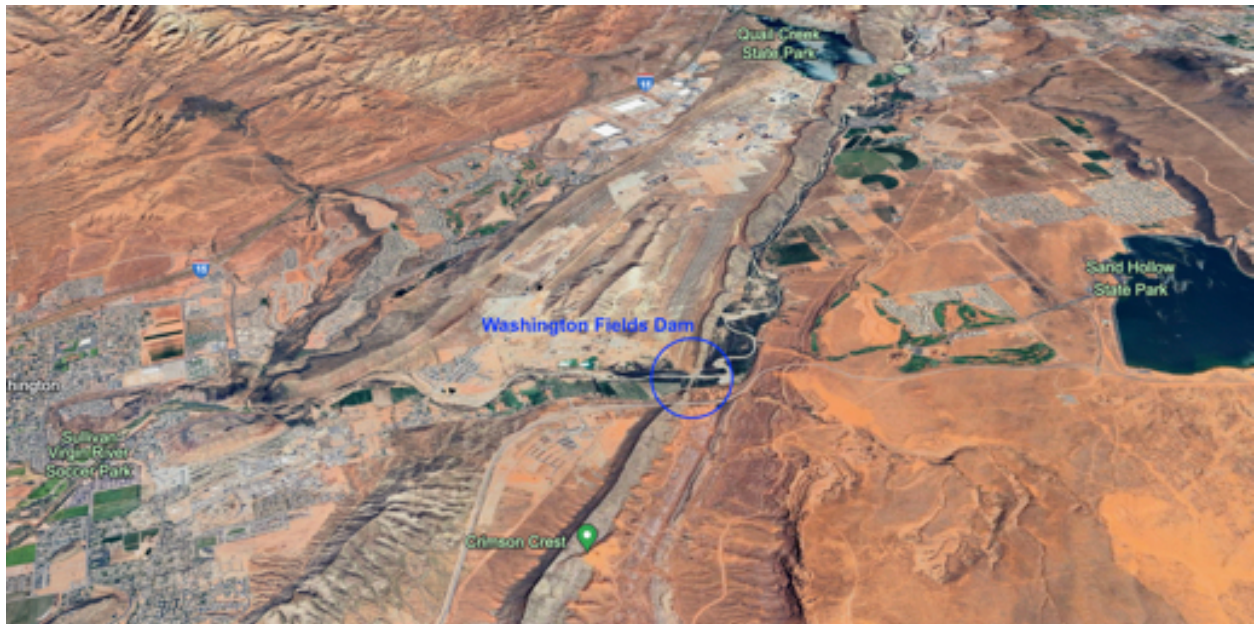
Major John Wesley Powell, 1890



Saint George and Washington Irrigation Company Canal emerging from Tunnel just below Dam



Washington Fields Dam Spillway during Flood



Washington Fields Dam location where Virgin River penetrates a long rock stratum ridge



Washington Fields Dam location on Virgin River as it crosses rock strata

