

## ST. GEORGE, UTAH

**LOCATION**—St. George, Washington County, is located on U. S. highway 91, in the extreme southwest corner of Utah, 318 miles south of Salt Lake City and 438 miles from Los Angeles.

**CLIMATE**—The seasonal variations in temperature at St. George range from freezing at night in the winter, to a noon day temperature of from 60 degrees to 70 degrees. In the summer the nights are cool, the days hot but dry. The elevation is 2780 feet.

**TRANSPORTATION**—The Pickwick Stage System and the Union Pacific each operate two busses per day each way. Freight needs are served by trucks from Cedar City, Salt Lake and Los Angeles.

**LIVESTOCK**—The citizens of Washington county in normal years run about 40,000 head of sheep and about an equal number of cattle on the open range. Dairy products, eggs and chickens are also sources of income.

**EXPORT CROPS**—Fruits and vegetables. The semi-tropical climate of Dixie ripens vegetables, berries and deciduous fruits much earlier than in any other section of Utah.

**SCHOOLS**—Grade schools care for the younger children while Dixie College provides for the advanced students, and being a junior college, two years' credits are given by state universities.

**MINING AND OIL**—Lead, copper and silver deposits in Washington county, or close to it, have been mined for the past 50 years. In addition, U. S. Petroleum Reserve No. 7 includes practically all of the government land for 12 miles south of St. George. Deep test wells are now being driven in the reserve and the shallow field near Virgin City is producing sufficient to warrant the operation of a small refinery of gasoline and by-products.

## Hotel Liberty

St. George's Newest Hotel

66 Rooms, with Bath and Telephone  
30 with Combination Tub and Shower

Rates, Single, \$1.50 to \$2.50

Double \$1.50 to \$4.00

Electric Fans and Ice Water  
in Every Room.

G. W. (Jockey) Hail, the proprietor and manager, believes it is a personal obligation as well as a pleasure, to serve ALL visitors to St. George.

The Liberty Cafe is open 24 hours a day and consists of counter, tables and a private dining room. The hotel is the depot for Pickwick stages. A soft drink fountain, drug store, barber shop, travel information bureau, and news stand are combined within the hotel building. A women's lounging and writing room opens off the main lobby.

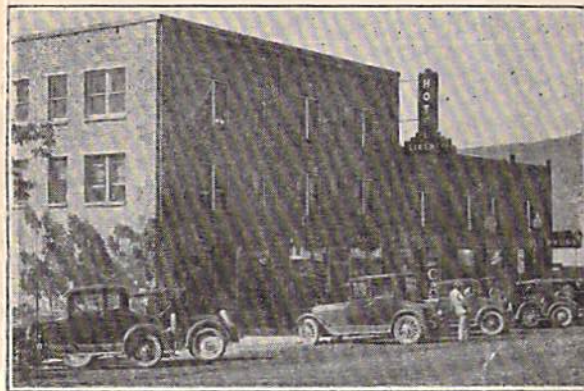
The Liberty Hotel and Cafe has the reputation of giving as much or more of hospitality and service than any other hotel in Southern Utah.

It is the ideal abode for the tourist, the commercial traveler, and the business man and woman.

# HOTEL LIBERTY



## St. George, Utah



Located on U. S. 91, the  
National Parks Route

Travel Information Booth

### THE STANDARD OF SERVICE

G. W. HAIL, Proprietor



## A VACATION LAND

St. George is surrounded with the most majestic and awe-inspiring scenery in the entire country. Upon approaching the town from the west, the great red cliffs of the Snow Canyon district are seen to the left. The reflection of the sunlight on these towering walls of sandstone is beautiful at morning, noon or at sunset.

Fifty-two miles east and north is Zion National Park, where vertical cliffs of tinted sandstone rise 3000 feet above the highway. Ascending to the summit on the Zion-Mt. Carmel highway, the walls of the canyon are penetrated by a tunnel paralleling the face of the cliff for a more than a mile. Six portals afford a magnificent view of the famous Zion scenery.

Cedar Breaks, 69 miles north, is reached either over the Mt. Carmel highway or by way of Cedar City. The view is from a brink of a deep, vastly eroded amphitheatre in a wild confusion of forms and coloring.

Bryce Canyon National Park is reached from Panguitch on U. S. 89. It is a blaze of color with thousands of fantastically eroded pinnacles, temples and spires that change their hue with every light and shadow.

The North Rim of the Grand Canyon of the Colorado is 173 miles from St. George. This majestic gorge is nature's greatest wonderland. The highway passes through the Kaibab National Forest, where thousands of deer graze in the beautifully wooded area of giant pines.

Pine Valley, 35 miles north, is an ideal summer mountain resort. Trout fishing and hunting are major attractions, as well as the cool climate and cold, pure mountain water. The highway leading to the mountain affords another wonderful view of the scenery of Snow Canyon.

## MILEAGE FROM ST. GEORGE

SOUTH	Miles	NORTH	Miles
Santa Clara .....	5	Washington .....	5
Ledges Station ..	25	Leeds .....	18
Nevin's Station ..	28	Zion Forks .....	20
White Front No. 3 ..	36	Anderson's .....	21
Littlefield .....	37	Midway .....	28
Mesquite .....	50	Kanarra .....	43
Bunkerville .....	55	Cedar City .....	51
Riverside .....	60	Parowan .....	73
Glendale .....	84	Paragonah .....	82
Crystal .....	102	Beaver .....	108
Dry Lake .....	108	Cove Fort .....	133
Las Vegas .....	135	Kanosh .....	153
Jean .....	164	Meadow .....	159
Mt. Pass .....	193	Fillmore .....	167
Baker .....	227	Holden .....	178
Cronise .....	245	Scipio .....	192
Midway .....	259	Levan .....	220
Yermo .....	280	Nephi .....	228
Barstow .....	293	Mona .....	240
Victorville .....	331	Payson .....	259
Summit .....	346	Spanish Fork .....	264
Cajon .....	352	Springville .....	269
San Bernardino .....	371	Provo .....	273
Riverside .....	388	Pleasant Grove .....	287
Glendora .....	410	American Fork .....	290
Pasadena .....	427	Murray .....	312
Los Angeles .....	438	Salt Lake City .....	318

### SALT LAKE via ZION AND U. S. 89

Zion Forks .....	20
Virgin .....	33
Rockville .....	44
Springdale .....	48
Zion Checking Station .....	50
Mt. Carmel Junction .....	75
Panguitch .....	128
Richfield .....	210
Manti .....	259
Nephi .....	298

### NATIONAL PARKS

Zion National Park .....	52
Cedar Breaks .....	69
Bryce Canyon .....	140
Grand Canyon .....	173
Kanab .....	94
Kanab to Lee's Ferry Bridge .....	90

## EARLY HISTORY

Southern Utah was first visited by white men in October, 1776, when Father Escalante and party passed within 10 miles of what is now the city of St. George, in an attempt to locate an overland route from Santa Fe to California. The city was settled by Mormon missionaries in 1861, when 309 families were called by President Brigham Young of the Mormon Church to establish the Dixie Mission. The town was named for George A. Smith, first counselor to President Young, who had charge of all the Southern Utah Missions.

One of the first tasks undertaken was the building of the St. George Tabernacle and the Temple, two buildings which still stand out as models of early day architecture. The Tabernacle was completed in 1871, and the Temple, the first building of its kind to be completed in the state, was finished in 1877.

The history of St. George is one of hardship and struggles against the desert, the savage and the elements, and it is doubtful if in the entire history of the west there can be found a more colorful narrative of faith and devotion to duty than was displayed by those hardy pioneers.

## OPPORTUNITIES

St. George presents many and varied opportunities. The principal resources of the country have so far been untouched. The days of pioneering are not yet a thing of the past. We welcome the vacationist, the sportsman, and those who will help in the development of the vast inland empire.

Full information regarding St. George and Southern Utah may be obtained by writing the Liberty Hotel.